

WRX

designed by Cailyn Meyer
dailyskein.wordpress.com

- **Finished Size:** Women's medium/Men's medium, circumference 7 1/2", length 5"; Men's large, circumference 8 1/2", length 6"
- **Needles:** Size 2 (2.75mm) double-point needles
- **Yarn:** MC - Argosy Luxury Fibers Hanna Sport, Blue Mills (1 [1] skein) CC: Alchemy Yarns Silk Purse, 36F Lantern (1 [1] skein)
- **Extras:** Tapestry needle, two stitch markers, 3 6" pieces of smooth scrap yarn or stitch holders
- **Gauge:** 30 sts/42 rows = 4" in stockinette

My husband came to me one day and said that he'd really like fancy driving gloves to match his new WRX. Not one to back down from a challenge-er request, I scoured local yarn shops and the Internet for just the perfect shade of yarn in "Impreza blue" to match the car. He wanted something shiny and, in his words, "fast." The yarns we decided on were not only an almost perfect color match; they're also soft and luxurious. I love the natural shine of the silk and silk/wool blend.

These gloves are knit with only a few rows of ribbing and then a mesh back adds some sportiness to the gloves. The right glove is worked across the back of the hand towards the thumb and then the palm; the left glove works across the palm towards the thumb and then the back of the hand. These gloves work up to the color work band pretty fast. The larger size fits an average man's hand. The smaller size is about a women's medium. They're pretty stretchy, but be careful to keep the floats loose during the color work. Personally, I think these gloves would look stunning in black and Ferrari red too.



All the craft that's fit to make.

THE DAILY SKEIN



This work by Cailyn Meyer is licensed under a Creative Commons Attribution-NonCommercial-Share Alike 3.0 United States License. November2008.

Special Stitches

M1R: Insert left needle tip into the strand between stitches from back to front and knit into the front of the loop.

M1L: Insert left needle tip into the strand between stitches from front to back and knit into the back of the loop.

Mesh Pattern:

Round 1: K1, *YO, ssk* over next 18 [20] sts, k1.

Round 2: Knit

Right Glove

Cuff

Using the Twisted German Cast On or the Long Tail Cast On, CO 40 [44] sts. Distribute evenly between the needles. Join to begin working in the round, being careful not to twist.

Round 1: *K1, p1* to end.

Repeat **Round 1 2 more times.**

Round 4: In CC, knit 1 round. (*This keeps the “purl dots” of the other color from showing and makes the stripe look smoother*).

Round 5: *K1, p1* to end. Break CC.

Round 6: In MC, knit 1 round.

Round 7: *K1, p1* to end.

Hand and Thumb Gusset

Round 8: K20 [22], k1, M1L, k10, M1L, k1 to 1 st before the end of the round, M1L, k 1. 3 sts increased. 43 [47] sts.

Round 9: Work **Round 1 of Mesh Pattern**, then knit to the end of the round.

Round 10: Work **Round 2 of Mesh Pattern**, then knit to the end of the round.

Repeat **Rounds 9-10 1 [2] more times.**

Next round: Work next round of Mesh Pattern, place marker, M1R, k1, M1L, place marker, knit to the end of the round.

Work 2 rounds even, working the Mesh Pattern as established.

[Thumb increase round: Work Mesh Pattern to marker, slip marker, M1R, knit to next marker, M1L, slip marker, knit to the end of the round. 2 sts increased.

Work 2 rounds even, working the Mesh Pattern as established.]

Repeat instructions between brackets until there are 15 [19] sts between the markers, ending after the second even round.

Next round: K1, M1L, k18 [20], M1L, k1. Place all sts between the markers on scrap yarn or a stitch holder (markers can be removed now). CO 3 sts, rejoin round, and knit to the end of the round. 15 [19] sts removed, 5 sts increased. 48 [52] sts.

Knit 24 [27], k1, M1L, knit to 1 before the end of the round, M1L, k1. 2 sts increased. 50 [54] sts.

Size L only: Work 1 round even.

Swirl Color Work Band

Size S: K13, M1L, k26, M1L, k13, M1L. 2 sts increased. 52 sts.

Size L: K13, M1L, k13, M1L, k13, M1L, k13, M1L, k to end of round. 4 sts increased. 58 sts.

Both sizes: Join CC and work **Right Swirl Chart** for 15 rounds. **The chart within the red lines repeats 3 times. Work the first 3[5] sts once, then the next 16 sts 3 times, then the last 3[5] sts once.**

Next round: K1, k2tog, k20 [23], k2tog, k2, k2tog, k20 [23], k2tog, k1. 4 sts decreased. 48 [54] sts.

Next round: K38 [48]. Place next 10 [12] sts (the last 5 [6] and the first 5 [6] of the round) on scrap yarn or a stitch holder for the pinky. CO 2 sts at the end of the round and rejoin in the round. 10 [12] sts removed, 2 sts increased. 40 [48] sts.

Knit 2 rounds.

Ring Finger

K6, place the next 28 [31] sts on scrap yarn or a stitch holder, CO 2 [3] sts, k8 [8]. 16 [17] sts.

Work 8 [10] rounds even.

Next round, S: *k1, p1* to the end.

Next round, L: *k1, p1* until 1 st before the end of the round, k1. (*This will keep the edge from curling.*)

Bind off sts using EZ's Sewn Bind Off.

Middle Finger

Return 7 [7] sts from the back of the hand and 7 [7] sts from the palm on the needles.

Join yarn at the back of the hand and k7, CO 3 [2] sts, k7, pick up and knit 4 sts along the cast on edge of the ring finger. 21 [21] sts.

Next round: K1, k2tog, k11, k2tog, k4. 2 sts decreased. 19 sts.

Work 8 [10] rounds even.

Next round: *k1, p1* until 1 st before the end, k1.

Bind off sts using EZ's Sewn Bind Off.



Index Finger

Return remaining sts to needles.

Join yarn at the back of the hand and k12 [15], pick up and knit 4 sts along the cast on edge of the middle finger. *18 [19] sts.*

Next round: K1, k2tog, k8 [9], k2tog, k4. *2 sts decreased. 16 [17] sts.*

Work 7 [9] rounds even.

Next round, S: *k1, p1* to the end.

Next round, L: *k1, p1* until 1 st before the end, k1.

Bind off sts using EZ's Sewn Bind Off.

Pinky

Return pinky sts to needles.

Join yarn at the palm side, k10 [12], pick up and knit 4 sts along the cast on edge of the ring finger. *14 [17] sts.*

Next round: K1, k2tog, k4 [7], k2tog, k4. *2 sts decreased. 12 [15] sts.*

Work 6 [8] rounds even.

Next round: *k1, p1* until 1 st before the end, k1.

Bind off sts using EZ's Sewn Bind Off.

Thumb

Return thumb sts to the needles.

Join yarn and k15 [19], pick up and knit 5 sts along the cast on edge of the hand. *20 [24] sts.*

Next round: K2, *k2tog, k3 [4],* three times, k2tog, k1 [2]. *4 sts decreased. 16 [20] sts.*

Work 8 [10] rounds even.

Next round: *k1, p1* to the end.

Bind off sts using EZ's Sewn Bind Off.

Left Glove

Work **Cuff** as for Right Glove.

Hand and Thumb Gusset

Round 8: K20 [22], k1, M1L, k10, M1L, k1 to 1 st before the end of the round, M1L, k1. *3 sts increased. 43 [47] sts.*

Round 9: K22 [25], then work **Round 1 of Mesh Pattern.**

Round 10: K22 [25], then work **Round 2 of Mesh Pattern.**

Repeat **Rounds 9-10 1 [2] more times.**

Next round: k21 [24], place marker, M1R, k1, M1L, place marker, work next round of Mesh Pattern.

Work **2 rounds even**, working the Mesh Pattern as established.

[Thumb increase round: Work Mesh Pattern to marker, slip marker, M1R, knit to next marker, M1L, slip marker, knit to the end of the round.

Work 2 rounds even, working the Mesh Pattern as estab-

lished.]

Repeat instructions between brackets until there are 15 [19] sts between the markers, ending after the second even round.

Next round: K1, M1L, k18 [20], M1L, k1. Place all sts between the markers on scrap yarn or a stitch holder (markers can be removed now). CO 3 sts, rejoin round, and knit to the end of the round. *15 [19] sts removed, 5 sts increased. 48 [52] sts.*

Size L only: Work 1 round even.

Swirl Color Work Band

Size S: K13, M1L, k26, M1L, k13, M1L. *2 sts increased. 52 sts.*

Size L: K13, M1L, k13, M1L, k13, M1L, k13, M1L, k to end of round. *4 sts increased. 58 sts.*

Both sizes: Join CC and work **Left Swirl Chart** for 15 rounds. **The chart within the red lines repeats 3 times. Work the first 3[5] sts once, then the next 16 sts 3 times, then the last 3[5] sts once.**

Next round: K1, k2tog, k20 [23], k2tog, k2, k2tog, k20 [23], k2tog, k1. *4 sts decreased. 48 [54] sts.*

Next round: K38 [48]. Place next 10 [12] sts (the last 5 [6] and the first5 [6] of the round) on scrap yarn or a stitch holder for the pinky. CO 2 sts at the end of the round and rejoin in the round. *10 [12] sts removed, 2 sts increased. 40 [48] sts.*

Knit 2 rounds.

Next round: K38 [48]. Place next 10 [12] sts (the last 5 [6] and the first5 [6] of the round) on scrap yarn or a stitch holder for the pinky. CO 2 sts at the end of the round and rejoin in the round. *10 [12] sts removed, 2 sts increased. 40 [48] sts.*

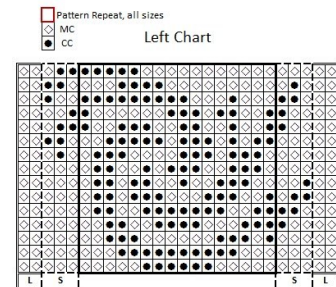
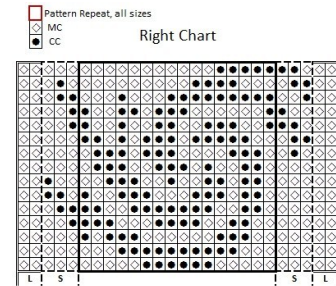
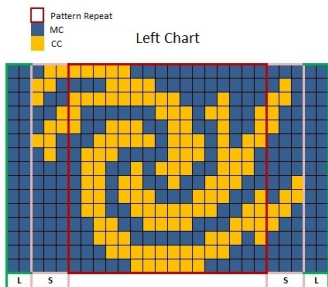
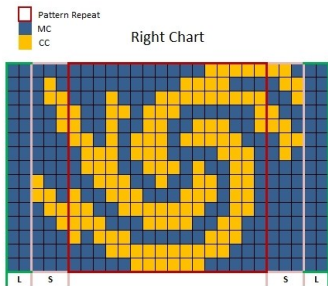
Knit 2 rounds.

Work the fingers and thumb for the left glove the same as for the right glove.

Finishing

Weave in all ends. Use tails and/or left over yarn to conceal any holes around the base of the fingers. Lightly steam block if desired.





Please Note: I post my patterns as soon as I've completed them because I'm excited to share them with you. They have not been fully tested. But they are free. I've made every effort to make sure that the instructions are clear and error-free. There may be typos or pattern mistakes and if you find them or have any questions, please let me know by posting a comment at dailyskein.wordpress.com or email me, dailyskein@gmail.com.



This work by Cailyn Meyer is licensed under a Creative Commons Attribution-Noncommercial-Share Alike 3.0 United States License. November2008.